



City of South San Francisco

CONSTRUCTION CONNECTION

New residential and commercial developments are coming to South San Francisco. Have questions about ongoing or future construction?

You have three ways to get your questions answered about construction in South San Francisco.

1. **Phone:** Contact our Construction Hotline: **(650) 829-4600**. You can leave a message and your call will be returned within 48 hours.
2. **Email:** Email us your question to Construction@ssf.net.
3. **Website:** The City website is frequently updated with the latest construction information available, along with an interactive map identifying projects going on in the City. Check it out: construction.ssf.net.

Follow the Economic and Community Development Facebook page to receive updates on projects in the City.

[Like us on Facebook!](#)

DOWNTOWN CONSTRUCTION IN SOUTH SAN FRANCISCO

CADENCE PROJECT (Miller @ Airport)

Currently, the construction team is working on utility connections which require lane reductions and temporary closures of Miller Avenue between Cypress and Airport. **This work is scheduled to be complete by October 26.**

In late November and December,



PG&E crews will complete additional work required for utilities. This work will require lane and/or partial road closures in the area.

Concrete pours occur every Monday, Wednesday and Friday and may cause partial lane closures and roadway delays.

About this project:

This new seven story, two-building residential development with 260 units at the corner of Miller Avenue and Airport Boulevard is anticipated to be complete by Q2 2019. (Rendering below)



PINEFINO PROJECT (Airport @ Baden)

This project will add 69 residential units, including affordable housing units, to the heart of downtown South San Francisco with convenient access to public transit and the downtown retail corridor. **Upcoming utility installations will require temporary closure of the right turn lane from Airport onto Baden.**

Completion of related site work including new curb, gutter, and sidewalk, as well as street paving of Cypress, Baden, and portion of Airport will occur next year.

The entire project will be complete around fall 2018. (Rendering below)



ROTARY SENIOR HOUSING PROJECT (300 Miller Avenue)



This project will provide 81 housing units exclusively for senior citizens. Currently, the contractors are installing the foundation and perimeter walls as well as installing utilities. To ensure the public's safety, this work requires the sidewalks immediately surrounding the job site to be closed to pedestrians. There will also be periodic road closures and potential traffic delays on surrounding streets including Tamarack Lane and Miller Avenue.

This project is anticipated to be complete around spring 2019. (Rendering below)



OTHER CONSTRUCTION PROJECTS IN SOUTH SAN FRANCISCO

GATEWAY OF THE PACIFIC

This project will be home to many biotech companies and commercial businesses as South San Francisco's economy continues to thrive. The completed project, on a 6.3-acre site, will have two office buildings, a 12-story and a five-story building and a two-level subterranean parking garage. There will also be a small amenity



building.

Currently, the contractors are laying the foundation work for the 12-story building. The developer anticipates the completion of construction around winter 2019.

ONE AND TWO TOWER PLACE - GENESIS TOWERS



The Genesis North Tower is nearing completion on the East side of 101. When the entire development of both the North and South towers are complete, they will offer a performing arts center, child care center, retail, restaurants and a hotel. The first phase North Tower high rise building will be complete around the fall of 2018.

About this Project:

"Genesis Towers" will ultimately provide 700,000 square feet of life science and office space. The existing 16-story South Tower is joined by an adjacent 21-story North Tower.



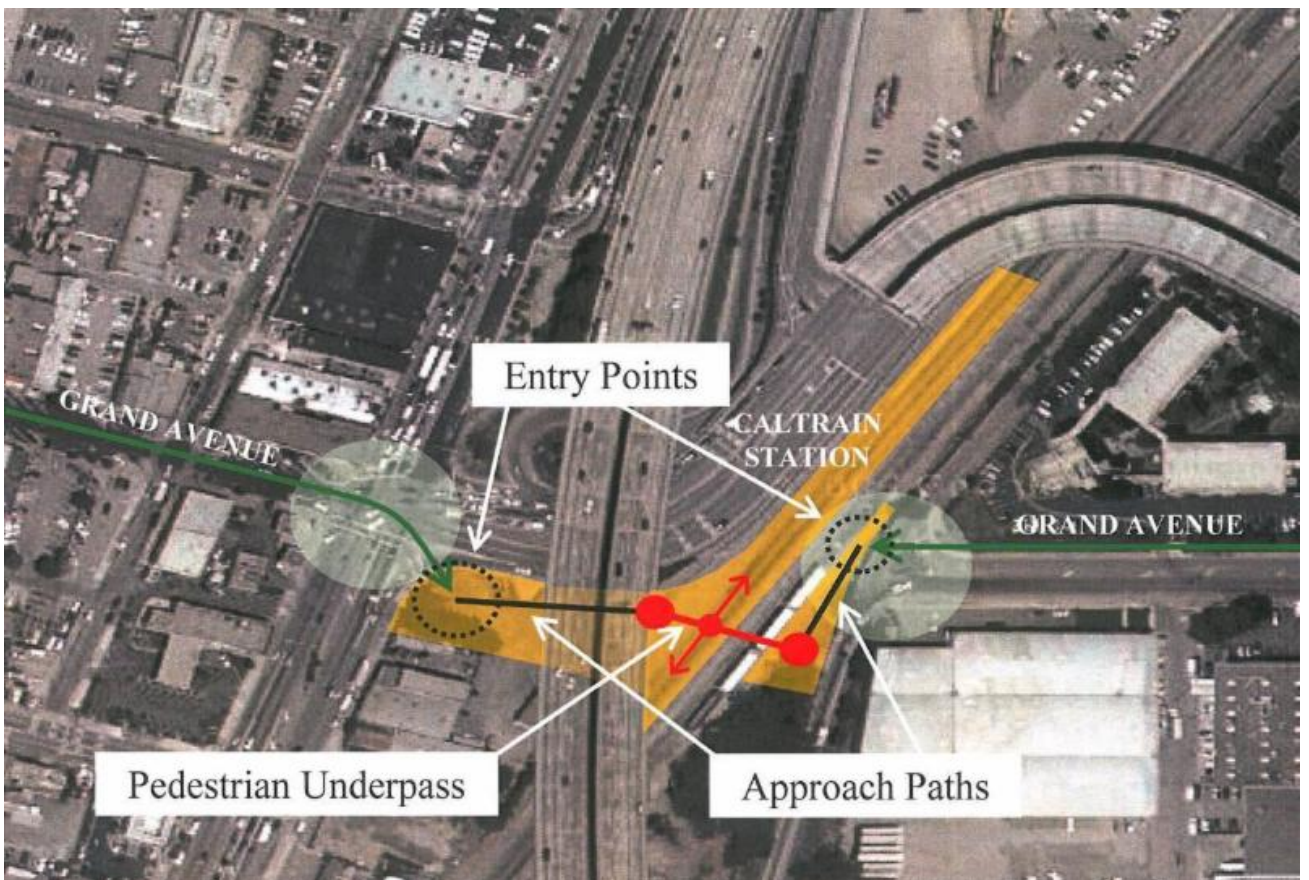
This project expands Merck Pharmaceutical's presence within the South San Francisco biotech cluster. The new project includes a nine-story office and research and development building, and multi-level parking garage covering 291,000 square feet of space. Steel framing is currently underway for the office space and the garage structure is also under construction. The project is expected to be complete by the summer of 2019.

About this Project:

According to the *San Francisco Business Times*, this multi-disciplinary discovery research facility will accommodate more than 300 scientists and support research spanning exploratory biology through early clinical development. The building is being custom designed with an open atmosphere that encourages collaboration and team work. The site will also have a large auditorium to provide space for nearby academics, scientists and entrepreneurs to convene and engage in scientific dialogue.



Caltrain Station Improvement Project



This project will expand the facilities and realign the current Caltrain Station on South Airport Blvd. to allow for improved pedestrian thoroughfare. A new freeway

underpass and public plaza area will allow for a safer and more vibrant use of this public space. The relocation and electrification work has started for this project. Caltrain anticipates completion of the improvements by fall 2019. During the electrification process there may be five minute roadway delays on S. Linden Avenue in both directions while material transport trains travel from the South San Francisco station to the San Bruno station for construction. The City will issue traffic alerts if major delays or road closures are expected.

Please visit the Caltrain [website](#) to sign-up for weekly construction updates. If you have questions or comments about the upcoming work, please call the dedicated **Project Hotline at 650.399.9659** or email calmod@caltrain.com.

Cal Water Services: Water Main Replacement

California Water Service (Cal Water) continues work on its water infrastructure upgrade program to improve water supply reliability and fire protection.

The work is conducted Monday through Friday between 9:00 a.m. and 4:30 p.m. The anticipated completion date for entire project is **November 2017**.

All inquiries shall be directed to **CWS hotline: 650-558-7842**. In case of **EMERGENCY** please contact Ben Voight's (650)-333-6135.

There are several projects in the City led by the South San Francisco Unified School District associated with Measure J.

For more information on these projects, please click [here](#), which will take you to the school district website.

City of South San Francisco | leslie.arroyo@ssf.net | <http://www.ssf.net>

