



City of South San Francisco

CONSTRUCTION CONNECTION

New residential and commercial developments are coming to South San Francisco. Have questions about ongoing or future construction?

You have three ways to get your questions answered about construction in South San Francisco. Please see below:

1. **Phone:** Contact our Construction Hotline: **650.829.4600**. You can leave a message and your call will be returned within 48 hours.
2. **Email:** Email us your question to Construction@ssf.net.
3. **Website:** The City website is frequently updated with the latest construction information available, along with an interactive map identifying projects going on in the City. Check it out: construction.ssf.net.

Follow the Economic and Community Development Facebook page to receive updates on projects in the City.

[Like us on Facebook!](#)

SSF DEVELOPMENT PROJECTS UNDER CONSTRUCTION

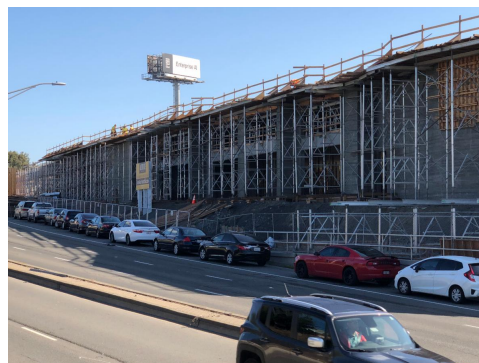
These are key development projects under construction that may affect your commute in South San Francisco.

150 AIRPORT BLVD.

Alert:

A material delivery and concrete pour schedule will impact a single northbound lane on Airport Boulevard between S. Airport Boulevard and Baden Avenue. Work will occur from 9:00 a.m. to 4:00 p.m. on Tuesday, October 29.

Underground utility work continues along Airport Boulevard resulting in impacts to northbound travel as work is underway. Work will be completed in phases to help minimize impacts. The first three phases are complete. The next phase will result in the following impacts:



Phase 4: There will be a two lane closure headed northbound on Airport Boulevard at Baden Avenue. Work will occur between Monday, October 28 and Friday, November 22 between the hours of 8:00 p.m. and 5:00 a.m.

Commuters can expect delays and are encouraged to use alternate routes.

HISENSE PROJECT (200 Linden Ave.)

Alert:

The following sidewalk closures remain in effect:

- Baden Avenue: The sidewalk between Linden Avenue and Cypress Avenue. Closed for the project duration with pedestrian signage in place.
- 3rd Lane: Partial traffic lane closure due to construction fencing; in place for the duration of the project. Vehicular and pedestrian access will be maintained.
- Linden Avenue: Sidewalk closed between Baden Avenue and 3rd Lane. Parking adjacent to closed section is reserved for construction crews and construction-related activities.



PG&E utility undergrounding and pole removal is scheduled between Monday, October 28 and Friday, November 1 resulting in impacts to 3rd Lane between Linden Avenue and Cypress Avenue, including the intersection at Linden Avenue and 3rd Lane. Anticipated work hours are Monday through Friday between 8:00 a.m. and 5:00 p.m. Access to 3rd Lane is limited to local residents/businesses and those exiting Parking Lot 4.

Early Alert

PG&E utility undergrounding and pole removal scheduled between Monday, November 4 and Friday, November 8 resulting in impacts to a single westbound lane along Baden Avenue between Airport Boulevard and Linden Avenue. Anticipated work hours are 9:00 a.m. and 5:00 p.m. daily.

Construction flaggers will be deployed to help with traffic control.

KILROY OYSTER POINT REDEVELOPMENT PROJECT (379 Oyster Point Blvd.)

Additional trucking is expected along Oyster Point Boulevard between US-101 off-ramp and Marina Boulevard from material delivery to site on a daily basis (Monday through Friday) until Wednesday, November 20, between the hours of **12:00 a.m. and 7:00 a.m.** Commuters can expect delays and are encouraged to use alternate routes.



Underground utility work scheduled at the intersection of Oyster Point Boulevard and Gull Drive through Monday, October 28. Work will impact travel in the eastbound and westbound directions along Oyster Point Boulevard as it will be reduced to a single travel lane in each direction between 8:00 p.m. and 5:00 a.m. Work will occur Monday through

Friday. Commuters can expect delays and are encouraged to use alternate routes. Please follow signage and safety personnel instructions at all times

Noise Alert:

Pile-driving operations continue through January, 2020. The contractor expects to install approximately 1,500 piles. Work is scheduled Monday through Friday, between 8:00 a.m. and 5:00 p.m.

For questions or more information, please contact the Oyster Point Hotline at 415.808.6030 or email oysterpointhotline@kilroyrealty.com.

SUMMERHILL HOMES PROJECT (988 El Camino Real) site of former South City Car Wash

Alert:

Soil off-haul activities continue between the hours of 7:00 a.m. and 5:00 p.m., Monday through Friday. Work will result in impacts to the on-street parking and sidewalk along Antoinette Lane south of Chestnut Avenue adjacent to the project. "No Parking" signs will be deployed at affected stalls and pedestrian/bicycle detour signage will be deployed during closure.



A portion of Centennial Way Trail along Antoinette Lane south of Chestnut Avenue is closed and will remain closed for the duration of construction. Pedestrian and bicycle detour signage is displayed noting safe path of travel.

Commuters can expect delays. Pedestrians are encouraged to use alternate routes; detour signage is in place noting safe path of travel.

OTHER CONSTRUCTION PROJECTS IN SOUTH SAN FRANCISCO

CALTRAIN ELECTRIFICATION & STATION IMPROVEMENT PROJECT

Alert:

A temporary lane and sidewalk closure along Poletti Way between East Grand Avenue and Corporate Drive remains in place to facilitate street improvements as part of the Caltrain South San Francisco Station Improvement Project. One lane of Poletti Way will remain accessible to local and through traffic during construction.

Nighttime noise generating activity is scheduled along the Caltrain tracks near the Airport Boulevard underpass. The contractor is drilling piles and pouring concrete on Friday and Saturday October 25 & 26 in two 24-hour shifts starting at 7:00 a.m.

Commuters can expect delays and are encouraged to use alternate routes. Please follow signage, speed limits in particular, and safety personnel instructions at all times.

Please visit the [Caltrain website](#) to sign-up for weekly construction updates. If you have questions or comments about the upcoming work, please call the dedicated Project Hotline at 650.399.9659.

The Caltrain station is expected to be complete Fall 2020.

GATEWAY OF THE PACIFIC (1000 GATEWAY BOULEVARD)

Alert:

Sidewalk, curb, and gutter installation continues impacting Gateway Boulevard at Oyster Point Boulevard. Work will impact the northbound right turn lane along Gateway Boulevard and merge lane at Oyster Point Boulevard **between the hours of 9:00 a.m. and 3:00 p.m.** as work is underway.

Commuters can expect delays and are encouraged to use alternate routes.

GRAND BOULEVARD INITIATIVE PROJECT (El Camino Real)

Alert:

Roadway improvements continue along El Camino Real between McLellan Drive and Kaiser Way. Between Monday, October 28 and Friday, November 1, construction continues with intermittent lane closures along El Camino Real. Lane closures will affect the southbound and northbound lanes between the hours of 9:00 a.m. and 5:00 p.m. along El Camino Real and speed limits are reduced to 25 mph in the construction zone.

Access to SamTrans bus route service and Kaiser Permanente via El Camino Real is maintained. All business remain open and every effort will be made to keep a minimum of two lanes open in each direction of travel.

PG&E UNDERGROUNDING (Antoinette Lane at Chestnut Avenue)

Alert:

Utility undergrounding and street restoration work continues daily at the intersection of Antoinette Lane and Chestnut Avenue between the hours of 8:00 a.m. and 4:00 p.m. Work impacts the northbound and southbound shoulders along Chestnut Avenue and Antoinette Lane.

There are several projects in the City led by the South San Francisco Unified School District associated with Measure J.

For more information on these projects, please click [here](#), which will take you to the school district website.

